



FOR LEASE



## PORTER BUILDING

227 SW PINE STREET  
PORTLAND, OREGON 97204

### AVAILABLE

Suite 300: 2,401 RSF (Avail 1/1/20)

Suite 310: 650 RSF (Avail 11/1/19)

Suite 320: 1,224 RSF

Entire 3rd Floor: 4,275 (Avail 1/1/20)

### RATES

\$19.00-21.00/RSF Full Service

### BUILDING HIGHLIGHTS

- Historic character
- Large windows, ample light
- Move-in ready with furniture available
- Bike storage available
- Easy access to MAX Lightrail, bus service, and freeways

### BRYN HOKKANEN

503.546.4534

bhokkanen@melvinmark.com

Licensed in OR

### RYAN BECKER

503.546.4551

rbecker@melvinmark.com

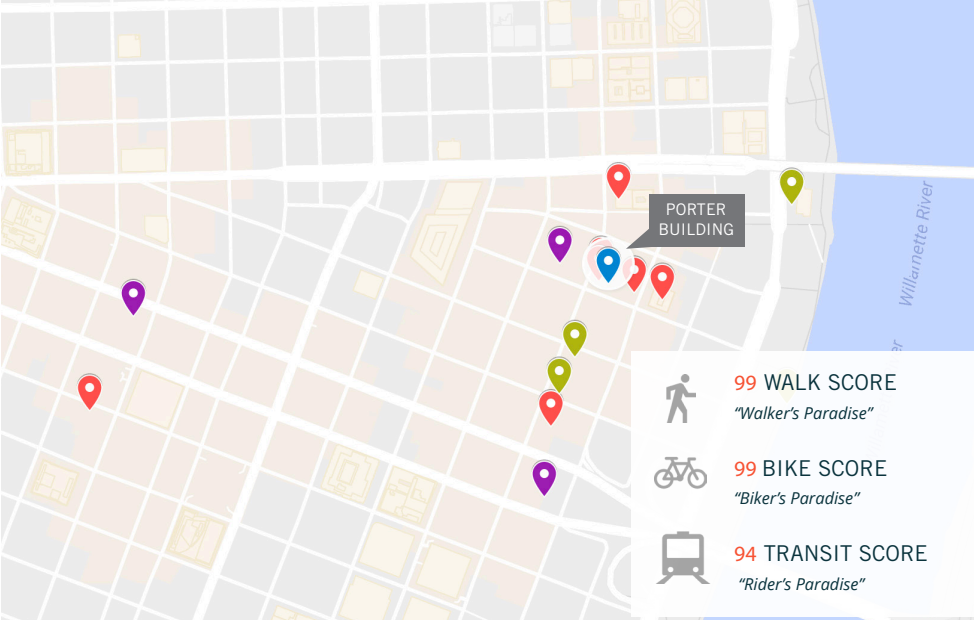
Licensed in OR

*All rights reserved. All information contained herein is from sources deemed reliable; however, no representation or warranty is made to the accuracy thereof.*



# ABOUT PORTER BUILDING

SW PINE STREET | PORTLAND, OREGON 97204



## BUILDING FEATURES

- Historic character
- Large windows, ample light
- Move-in ready with furniture available
- Bike storage available
- Ample parking nearby
- Copier available
- Easy access to MAX Lightrail, bus service, and freeways
- Responsive management, local owners

## RESTAURANTS

Bijou Cafe  
Stumptown Coffee Roasters  
Voodoo Donuts  
Pine Street Market  
E-San Thai Cuisine  
Numerous food cart pods  
Kingsland Kitchen  
Mother's Bistro & Bar

## SERVICES

Embassy Suites Hotel  
Documart Printing  
FedEx Shipping & Printing

## RETAIL

Portland Saturday Market  
Portland Outdoor Store  
Pioneer Place  
Nordstrom Rack  
Waterfront Park

All rights reserved. All information contained herein is from sources deemed reliable; however, no representation or warranty is made to the accuracy thereof.

**ABOUT** **PORTER BUILDING**

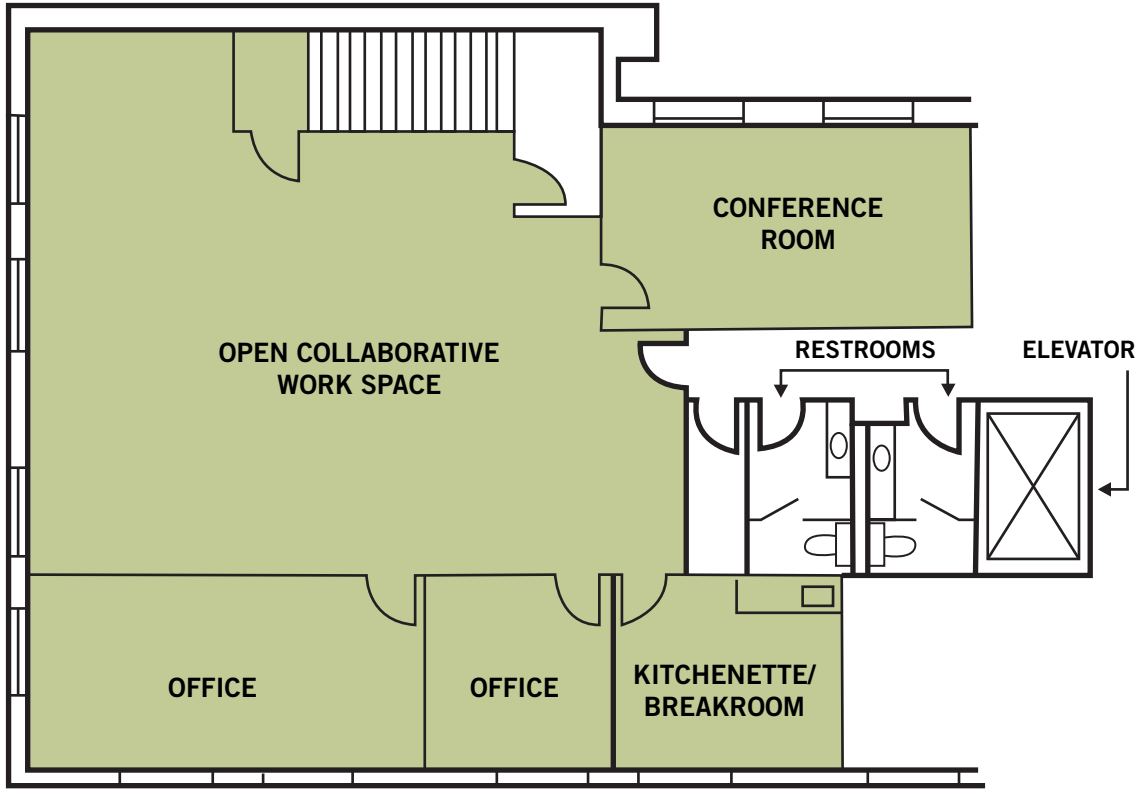
227 SW PINE ST | PORTLAND, OR 97204

**AVAILABLE**

Suite 300: 2,401 RSF  
(Avail 1/1/20)

**RATES**

\$19.00-21.00 RSF  
Full Service



Suite 300 2,401 RSF

FOR LEASE PORTER BUILDING  
227 SW PINE STREET  
PORTLAND, OREGON 97204

BRYN HOKKANEN  
503.546.4534  
bhokkanen@melvinmark.com

RYAN BECKER  
503.546.4551  
rbecker@melvinmark.com

**ABOUT** **PORTER BUILDING**

227 SW PINE ST | PORTLAND, OR 97204

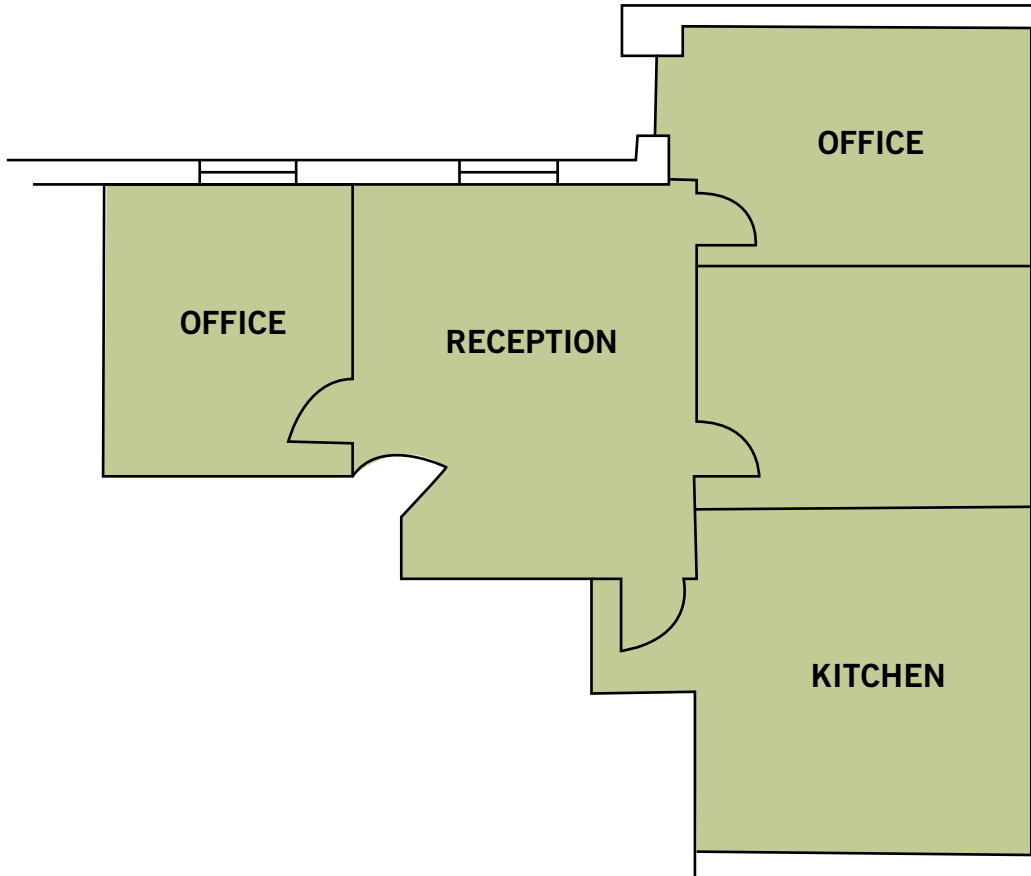
**AVAILABLE**

Suite 320: 1,224 RSF

**RATES**

\$19.00-21.00 RSF

Full Service



**Suite 320** 1,224 RSF

FOR LEASE PORTER BUILDING  
227 SW PINE STREET  
PORTLAND, OREGON 97204

**BRYN HOKKANEN**  
503.546.4534  
bhokkanen@melvinmark.com

**RYAN BECKER**  
503.546.4551  
rbecker@melvinmark.com