

FOR LEASE



MELVIN MARK

EST. 1945

PIONEER PARK

715 SW Morrison Street Portland, Oregon 97205

*Office Space Available Now
from 627-4,659 RSF*

\$24.00/SF Full Service

EXPLORE THE SPACE
WITH A VIRTUAL TOUR



PAUL ANDREWS

503.546.4542

pmandrews@melvinmark.com

Licensed in OR

BRYN HOKKANEN

503.546.4534

bhokkanen@melvinmark.com

Licensed in OR

Melvin Mark Brokerage Co.
111 Southwest Columbia
Portland, Oregon 97201
P: 503.223.9203 | melvinmark.com

PIONEER PARK FOR LEASE



BUILDING HIGHLIGHTS

- Adjacent to Pioneer Square, Portland's "Living Room"
- Steps to TriMet MAX line
- New carpet, ceiling tile, LED lighting and restrooms
- Bicycle locker access
- On-site shower facility
- Customer parking nearby

At the epicenter of Portland's business and financial districts, the 10-story, historic building sets the standard of excellence in high performance work environments.



PROFESSIONAL
SERVICES



RETAIL SPACE
AVAILABLE



SUSTAINABLE
PRACTICES



BIKE
ACCESSIBILITY



COFFEE
SHOP(S)
NEARBY



DINING
NEARBY

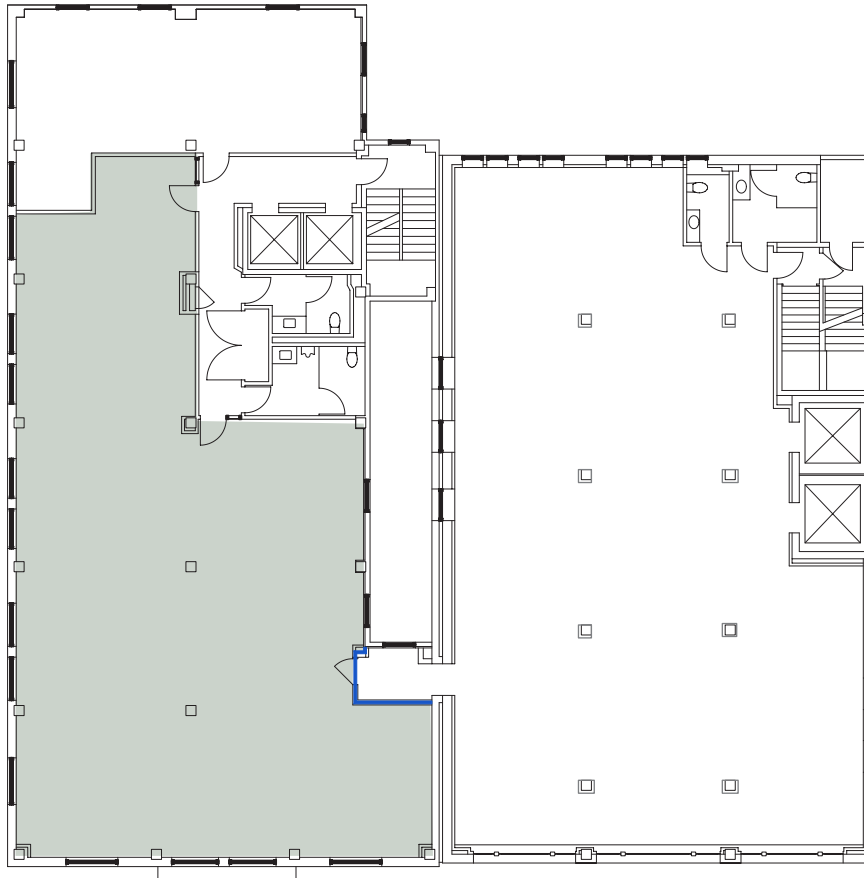


CREATIVE
WORK SPACE
AVAILABLE



CENTRAL
LOCATION





SUITE 500 4,228 RSF (approx.)

Available Now

\$24.00/SF Full Service

Base rent of \$19.50/SF for first 3 years of “as-is” leases

PAUL ANDREWS

503.546.4542

pmandrews@melvinmark.com

Licensed in OR

BRYN HOKKANEN

503.546.4534

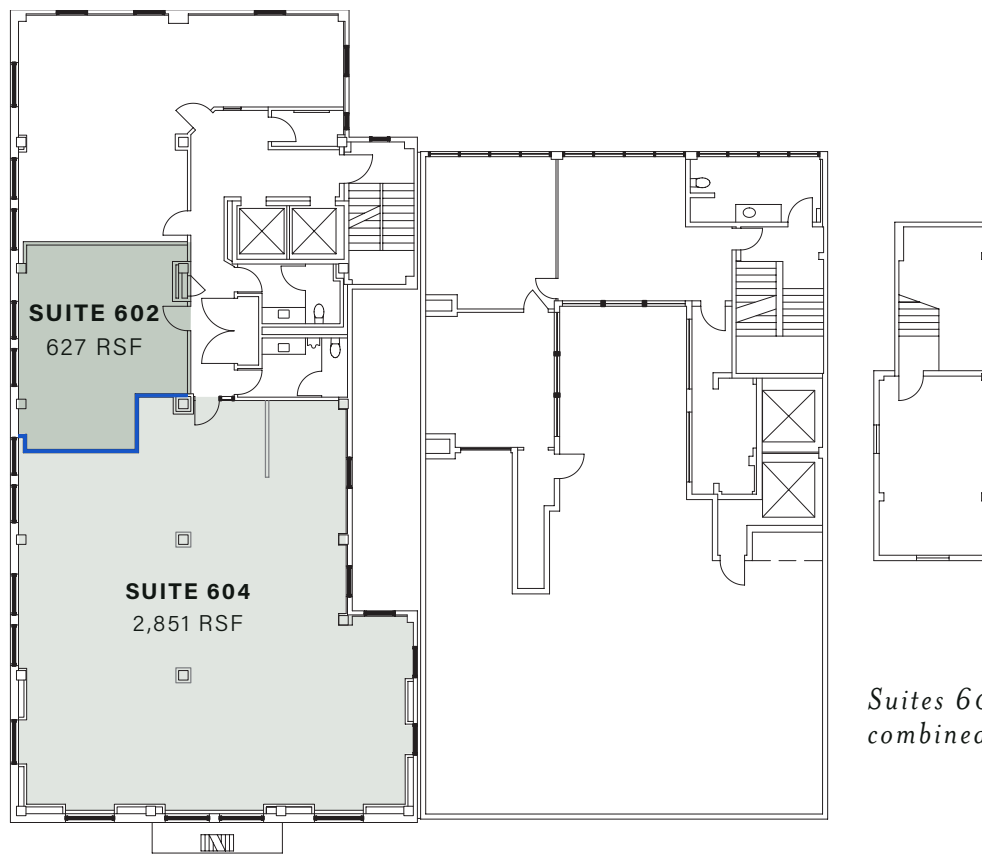
bhokkanen@melvinmark.com

Licensed in OR



PIONEER PARK AVAILABILITY

715 SW Morrison St
Portland, OR 97205



*Suites 602 and 604 can be combined to be **3,478 RSF***



SUITES 602 & 604 675-2,851 RSF (approx.)

Available Now

\$24.00/SF Full Service

EXPLORE THE SPACE
WITH A VIRTUAL TOUR



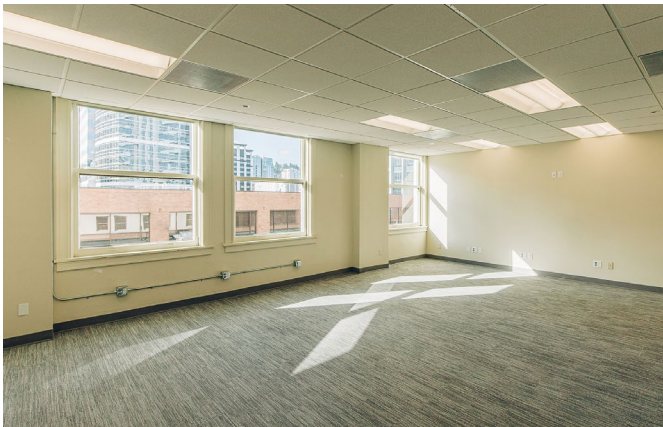
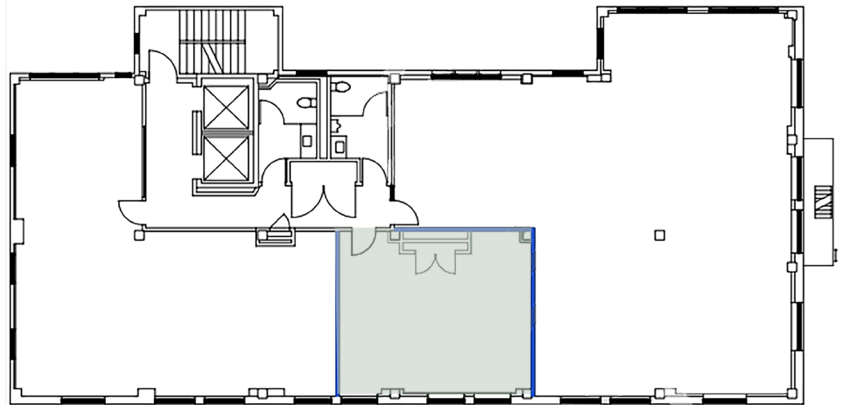
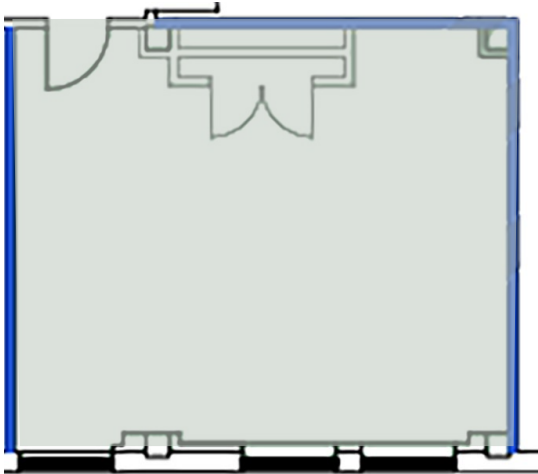
PAUL ANDREWS
503.546.4542
pandrews@melvinmark.com
Licensed in OR

BRYN HOKKANEN
503.546.4534
bhokkanen@melvinmark.com
Licensed in OR



PIONEER PARK AVAILABILITY

715 SW Morrison St
Portland, OR 97205



SUITE 701 678 RSF (approx.)

Available Now

\$24.00/SF Full Service

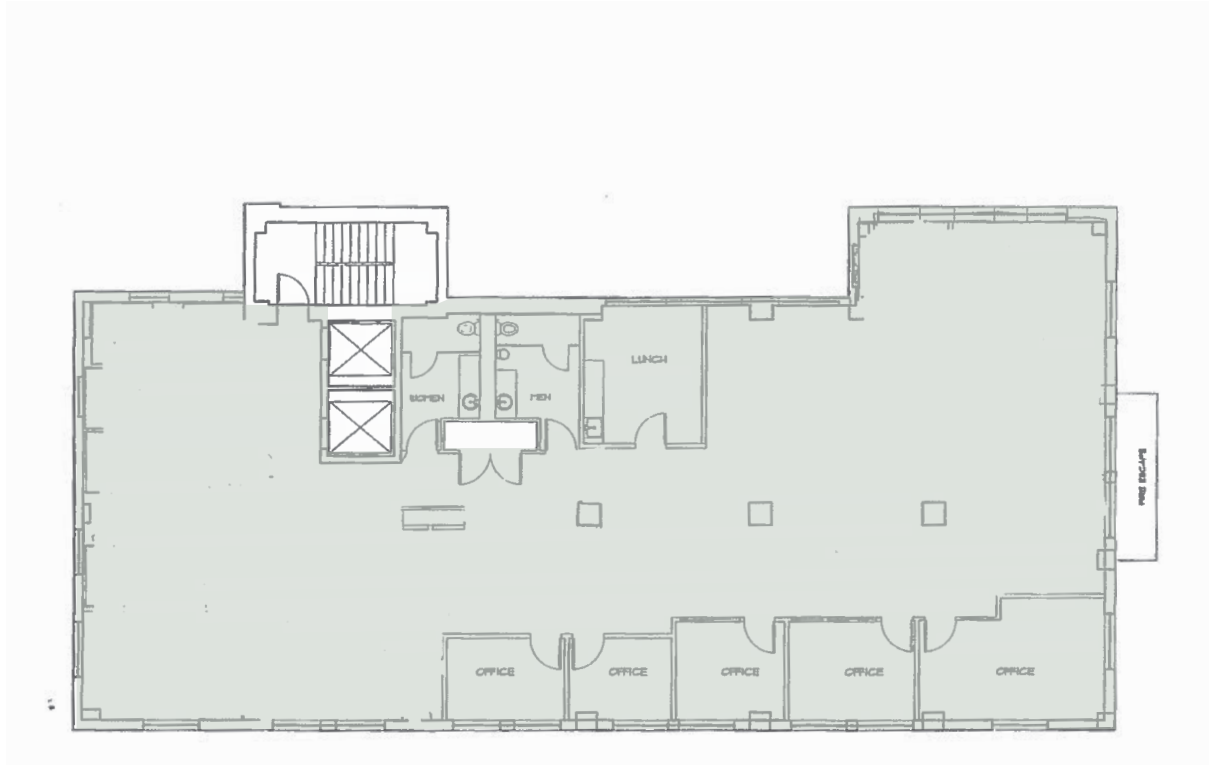
PAUL ANDREWS
503.546.4542
pmandrews@melvinmark.com
Licensed in OR

BRYN HOKKANEN
503.546.4534
bhokkanen@melvinmark.com
Licensed in OR



PIONEER PARK AVAILABILITY

715 SW Morrison St
Portland, OR 97205



SUITE 800 4,659 RSF (approx.)

Available Now

\$24.00/SF Full Service

EXPLORE THE SPACE
WITH A VIRTUAL TOUR



PAUL ANDREWS

503.546.4542
pmandrews@melvinmark.com
Licensed in OR

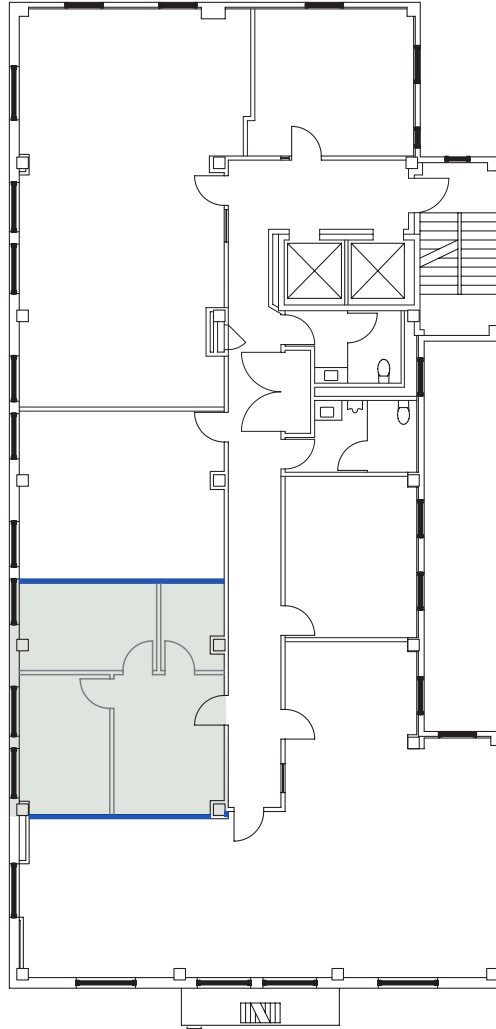
BRYN HOKKANEN

503.546.4534
bhokkanen@melvinmark.com
Licensed in OR



PIONEER PARK AVAILABILITY

715 SW Morrison St
Portland, OR 97205



SUITE 907 716 RSF (approx.)

Available Now

\$24.00/SF Full Service

PAUL ANDREWS

503.546.4542

pmandrews@melvinmark.com

Licensed in OR

BRYN HOKKANEN

503.546.4534

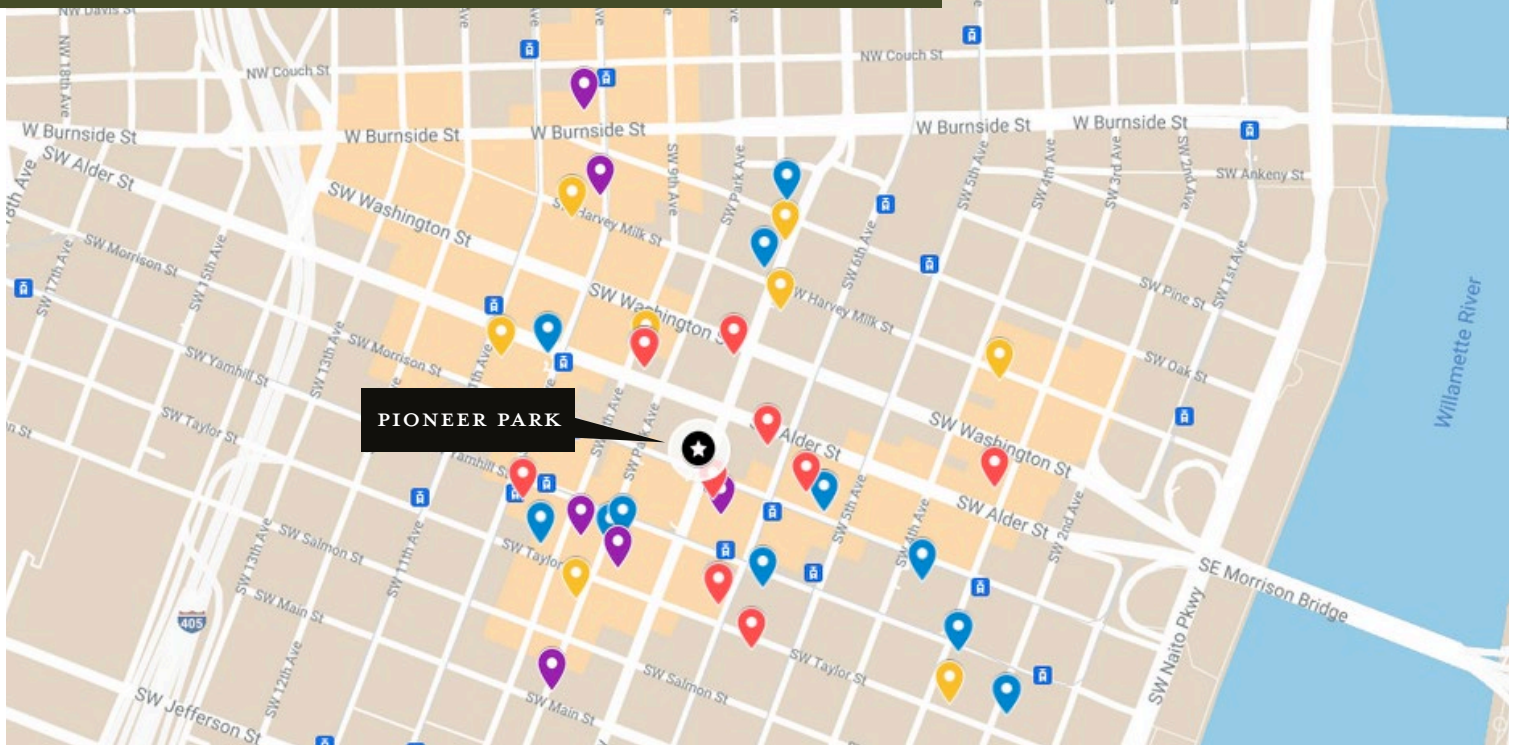
bhokkanen@melvinmark.com

Licensed in OR





PIONEER PARK FOR LEASE



HOTELS

Woodlark
Ace Hotel
The Nines Hotel
Hi-Lo Hotel
Paramont Hotel
Hotel Lucia
The Sentinel Hotel
Benson Hotel
AC by Marriott

CAFES

Moonstuck Chocolate Cafe
Starbucks
Upper Left Roasters
Good Coffee
St. Honoré Bakery
Case Study Coffee Roasters
Water Avenue Coffee
Kure Juice Bar
Barista

ATTRACTIONS

Pioneer Square
Director Park
Fox Tower Cinemas
Portland Art Museum
Arlene Schnitzer Concert Hall
Oregon Historical Society
Park Blocks
Powell's Books

RESTAURANTS

Bullard
Departure Restaurant + Lounge
Swine Bar
Jake's Grill
Flying Elephants at Fox Tower
Ben & Jerry's
The Independent Sports Bar & Grill
El Gaucho
Punch Bowl Social
Chipotle Mexican Grill
Pastini Pastaria
Q Restaurant & Bar



98

WALK SCORE

"Walker's Paradise"



93

BIKE SCORE

"Biker's Paradise"



95

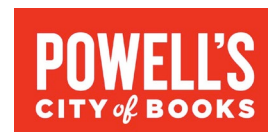
TRANSIT SCORE

"Rider's Paradise"

IN GOOD COMPANY



**STUMPTOWN
COFFEE ROASTERS**





FOR LEASE **PIONEER PARK**

715 SW Morrison Street | Portland, OR 97205

PAUL ANDREWS

503.546.4542
pmandrews@melvinmark.com
Licensed in OR

BRYN HOKKANEN

503.546.4534
bhokkanen@melvinmark.com
Licensed in OR

The information contained herein has been obtained from sources we deem reliable.
We do not, however guarantee its accuracy. All information should be independently verified prior to purchase or lease.